

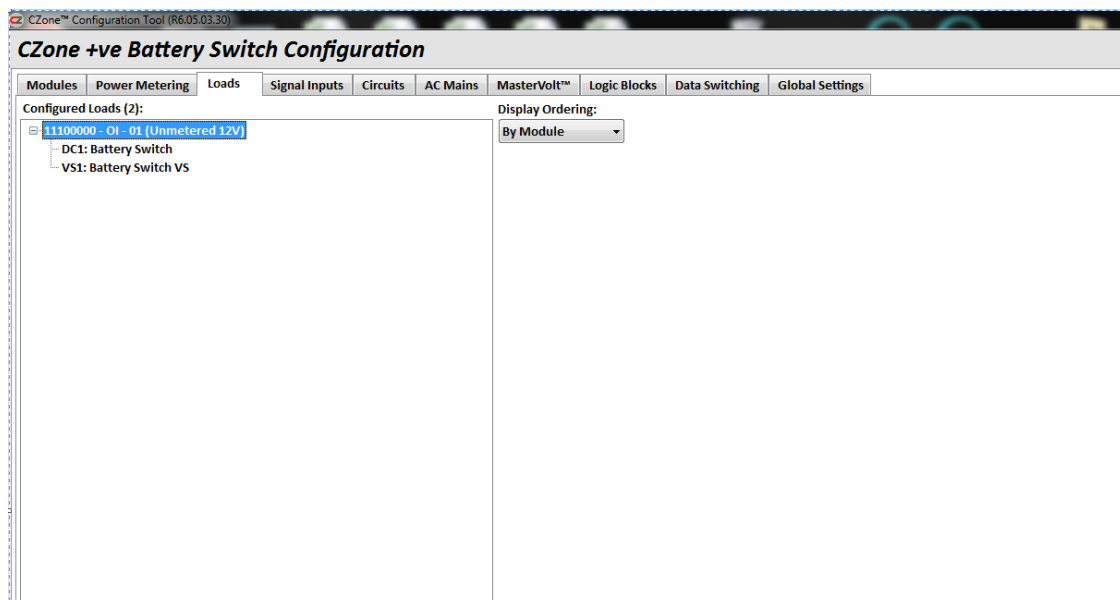
CZone Setup For The 701-MDCZ Motorized Battery Switch, With Virtual Load To Provide Circuit Status

Note: These instructions are for a system where the 701-MDCZ switch/switches are only controlled through CZone i.e. there are no mechanical switches/devices also controlling the 701-MDCZ.

If there are also mechanical switches/devices connected in addition to the CZone connection, the Battery Switch Virtual Signal feedback will not show the battery switch status correctly, and instead a sensing connection from the battery switch loads should be wired to a CZone Signal Interface if switch status is to be monitored. Alternatively if any CZone modules are switched On/Off by the 701-MDCZ switch, switch status can be derived from a Virtual Load which turns on whenever the module is powered.

LOAD SETUP (FOR THE OUTPUT INTERFACE):

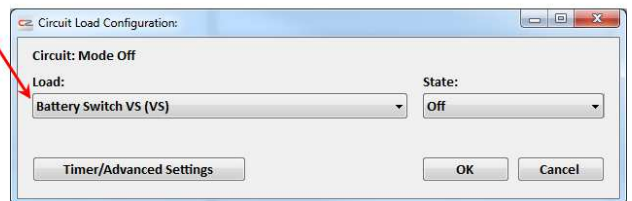
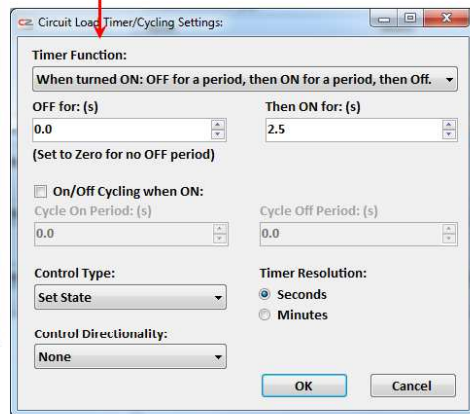
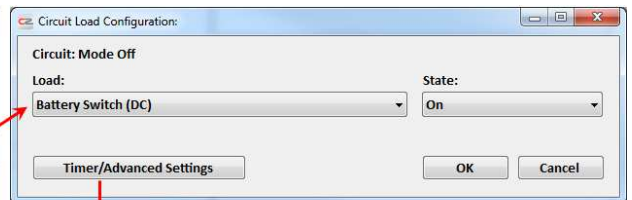
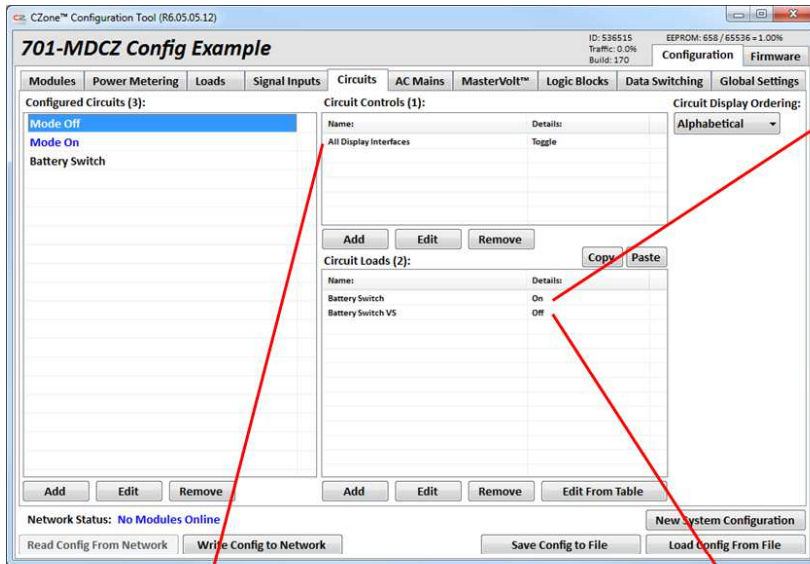
- Add a Battery Switch
- Add a Battery Switch VS (Virtual Signal)



CIRCUIT SETUP MODES:

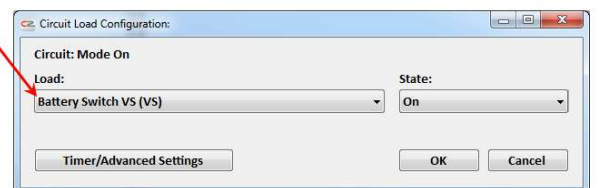
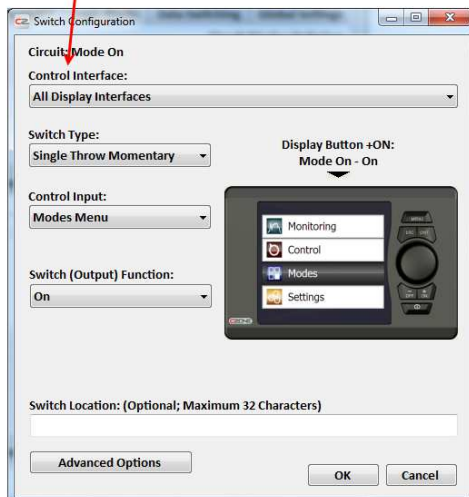
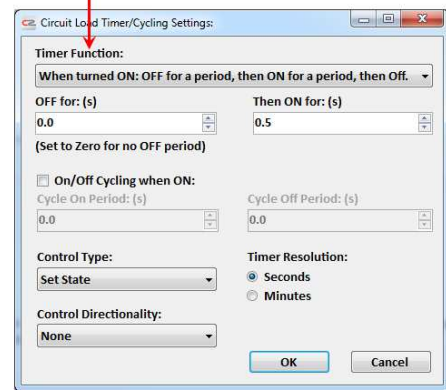
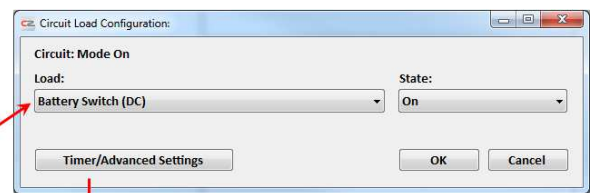
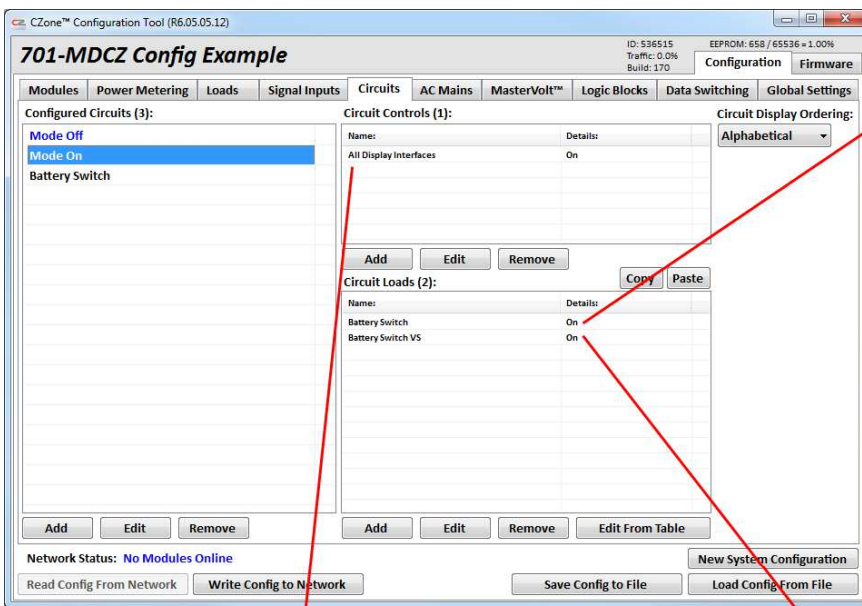
To Turn the Battery Switch **OFF in a Mode with feedback to Display;**

- Setup Mode Name as required
- Setup 'Circuit Control' Switch (Recommended; Single Throw Momentary, On)
- Setup 'Circuit Load' –
 - Add "Battery Switch DC" load
 - Configure 'State' of Battery Switch Load to; ON
 - Set Timer for Battery Switch Circuit – "When ON; OFF; ON (See Image below)"
 - 'Off' = 0.0 Secs
 - 'On' = 2.5 Secs
 - Add "Battery Switch VS" Load
 - Configure 'State' of "Battery Switch VS" Load to; OFF



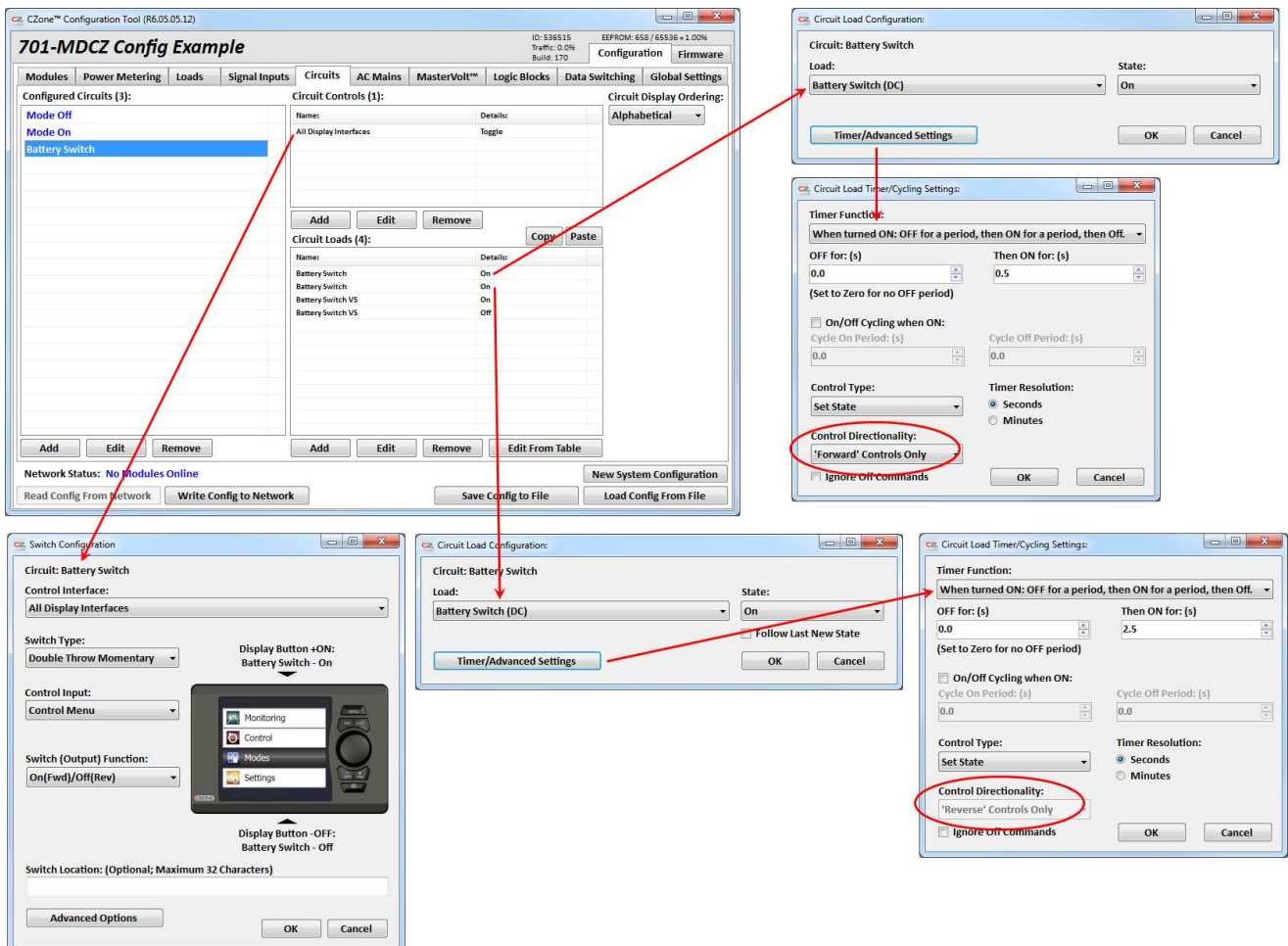
To Turn the Battery Switch **ON** in a Mode with feedback to Display;

- Setup Mode Name as required
- Setup 'Circuit Control' Switch (Recommended; Single Throw Momentary, On)
- Setup 'Circuit Load' –
 - Add "Battery Switch DC" load
 - Configure 'State' of Battery Switch Load to; ON
 - Set Timer for Battery Switch Circuit – "When ON; OFF; ON"
 - 'Off' = 0.0 Secs
 - 'On' = 0.5 Secs
 - Add "Battery Switch VS" Load
 - Configure 'State' of "Battery Switch VS" Load to; ON

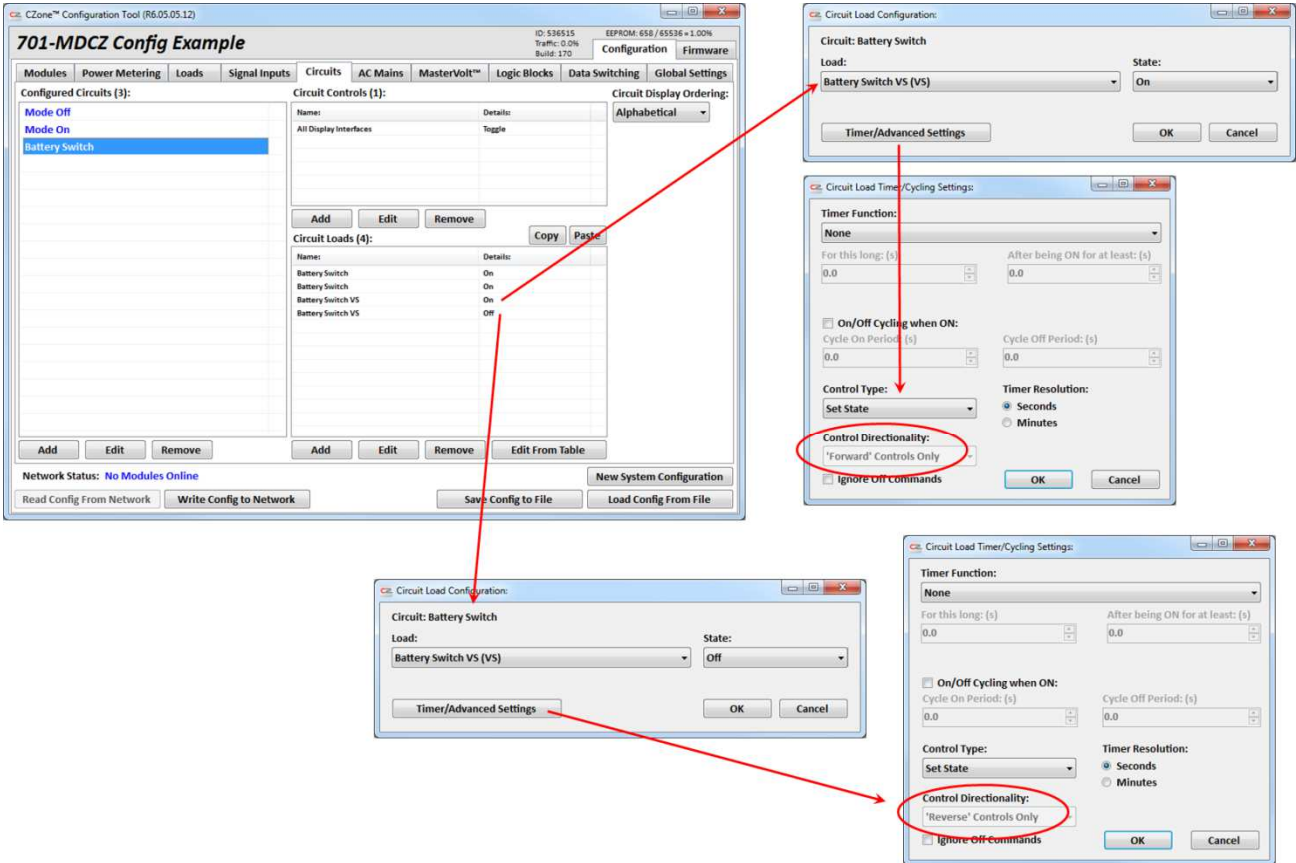


To Turn the Battery Switch **ON/OFF** in a **Circuit** with feedback to Display;

- Setup Circuit Name as required
- Setup 'Circuit Control' Switch to (Double Throw Momentary; ON(FWD)/OFF(REV))
- Setup 'Circuit Load' –
 - Add "Battery Switch DC" load
 - Configure 'State' of Battery Switch Load to; ON
 - Set Timer for Battery Switch Circuit – "When ON; OFF; ON"
 - 'Off' = 0.0 Secs
 - 'On' = 0.5 Secs
 - Set "Control Directionality" to 'Forward Controls Only'
 - Get here by double clicking the Circuit Load and selecting the Advanced Tab
 - This will display timer controls and Directionality controls.
 - See below image for clarification
 - Add second "Battery Switch DC" load
 - Configure 'State' of Battery Switch Load to; ON
 - Set Timer for Battery Switch Circuit – "When ON; OFF; ON"
 - 'Off' = 0.0 Secs
 - 'On' = 2.5 Secs
 - Set "Control Directionality" to 'Reverse Controls Only'
 - Get here by double clicking the Circuit Load and selecting the Advanced Tab
 - This will display timer controls and Directionality controls.
 - See below image for clarification



- Add “Battery Switch VS” Load
- Configure ‘State’ of “Battery Switch VS” Load to; ON
- Set “Control Directionality” to ‘Forward Controls Only’
 - Navigate here as above
- Add second “Battery Switch VS” Load
- Configure ‘State’ of “Battery Switch VS” Load to; OFF
- Set “Control Directionality” to ‘Reverse Controls Only’



MARINCO[®]

BEP PRODUCTS

MARINCO

N85 W12545 Westbrook Crossing
Menomonee Falls, WI 53051
800.307.6702

marinco.com

MASTERVOLT

Snijdersbergweg 93
1105 AN AMSTERDAM ZO
The Netherlands

+31(0)20 34 22 100

MARINCO BEP PRODUCTS

42 Apollo Drive
Rosedale, Auckland 0632
New Zealand

+64 9 415 7261